



Plan 2 MC8A

2.33 CUBIC FEET ENCLOSURE

Basic Construction Notes:

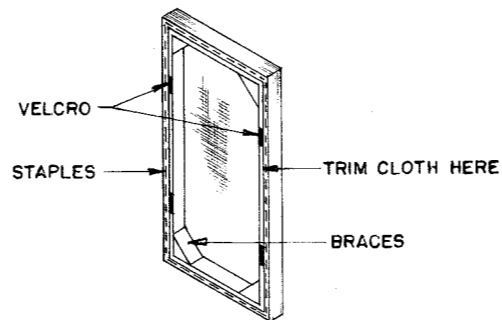
1. Enclosure inside dimensions compensate for the internal volume taken up by speaker components, internal bracing, and the vent. Slight variations due to the specific mid- and high-frequency components used do not affect performance.
2. All corners and joints to be securely glued and nailed or screwed.
3. Three mutually adjacent inside surfaces (top, one side, and rear) to be lined with a 1- or 2-inch thickness of glass wool or similar acoustic absorptive material. Do not block vent opening.
4. Enclosure material to be 3/4" plywood or particle board.
5. Internal bracing to be 3/4" x 3/4" or 1" x 1" material.
6. The front or rear enclosure panel must be removable for installation of the woofer (MC8A), which must mount to the rear of the front panel. Removable panels should be secured with wood screws and weather stripping tape.
7. For more detailed commentary on construction, see "Electro-Voice Guide to Speaker Enclosure Construction" (Form 1788).

Speaker Installation Notes:

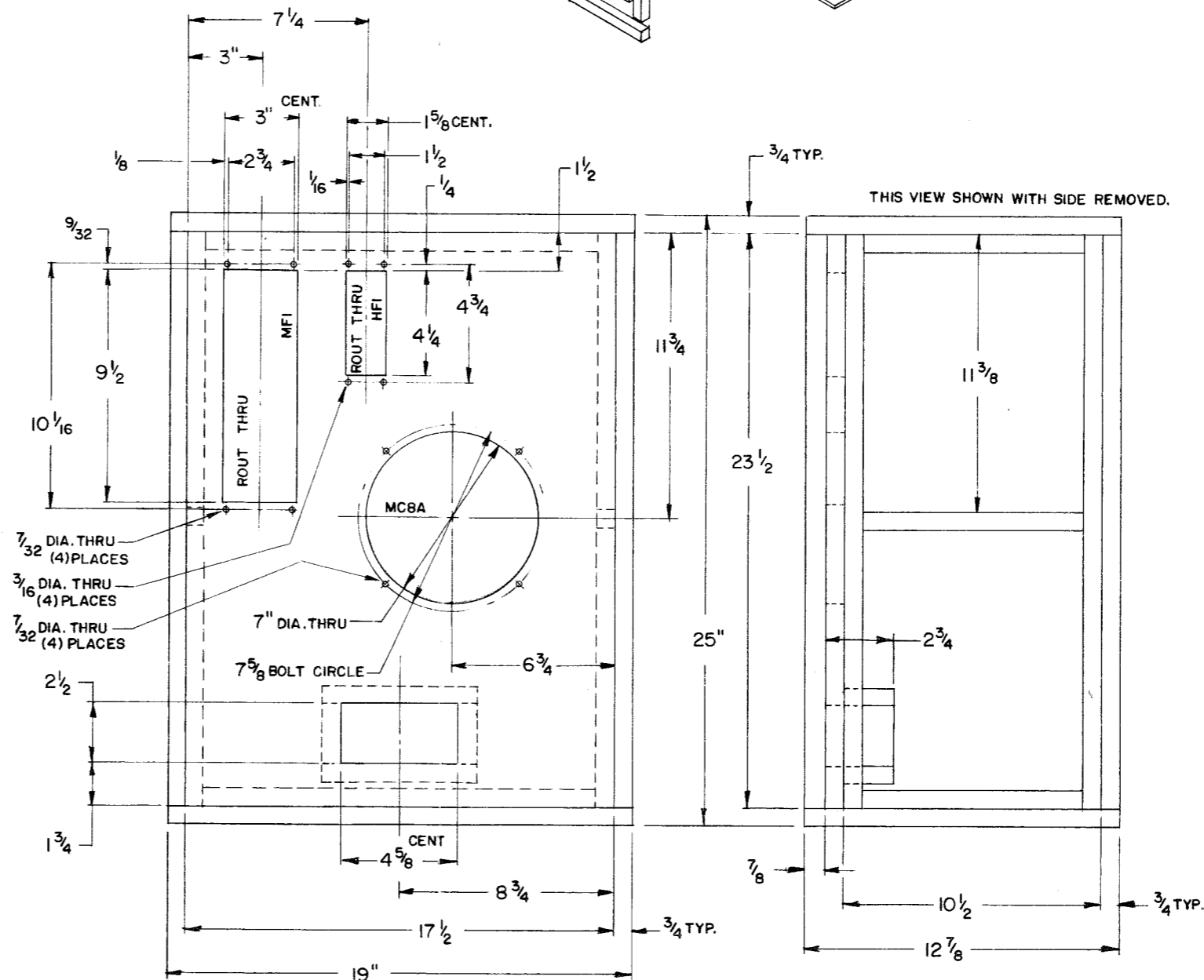
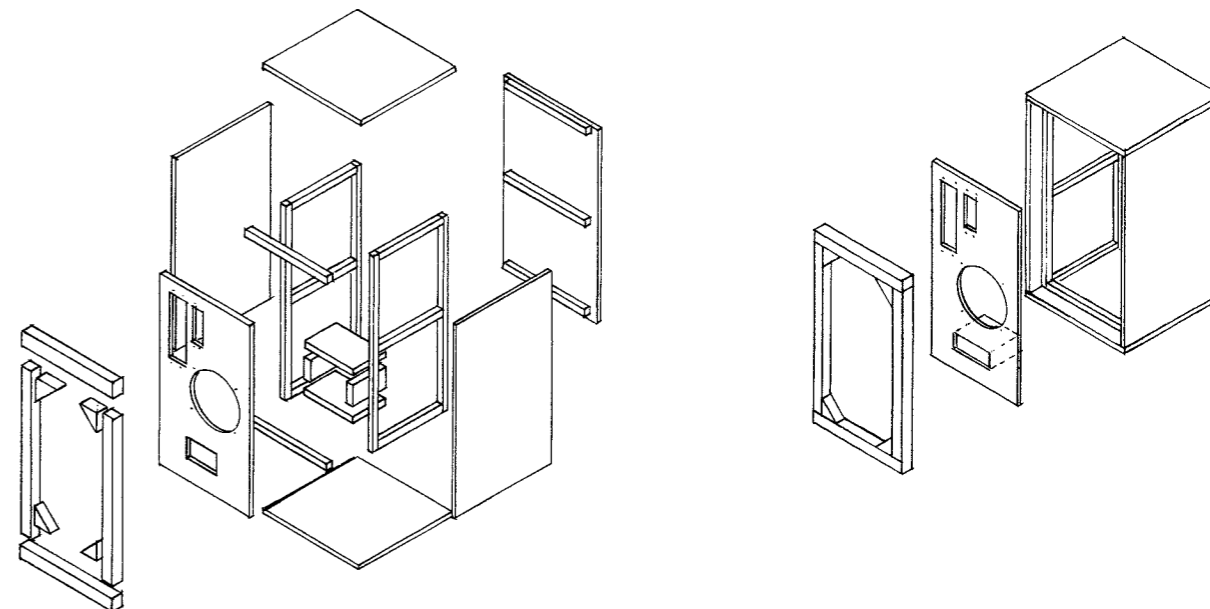
1. Machine screws (bolts) and nuts are recommended for installation of speaker components, although wood screws may be used. When machine screws are used, T-nuts are convenient, since they are easily affixed to the front panel before component installation.
2. The MR10 (part of MF1) may be mounted from the front or rear of the front panel. Use # 10-24 or # 10-32 nuts and bolts.
3. The TW35 (part of HF1) must be rear mounted. Use # 8-32 or # 8-40 nuts and bolts.
4. The MC8A must be rear mounted. Use # 10-24 or # 10-32 nuts and bolts.

Performance Specifications with MC8A:

1. Low-Frequency 3-dB-Down Point: 50 HZ
2. SPL_{MF(max)}: 106 dB
3. SPL_{LF(max)}: 101 dB
4. For definitions and other specifications see Engineering Data Sheet and E-V brochure "How to build an Electro-Voice Component Speaker System. From the ground up."



REAR VIEW OF GRILLE FRAME WITH CLOTH



Electro-Voice[®]

a MARK IV company

600 CECIL STREET, BUCHANAN, MICHIGAN 49107